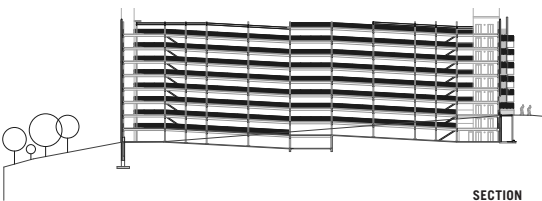
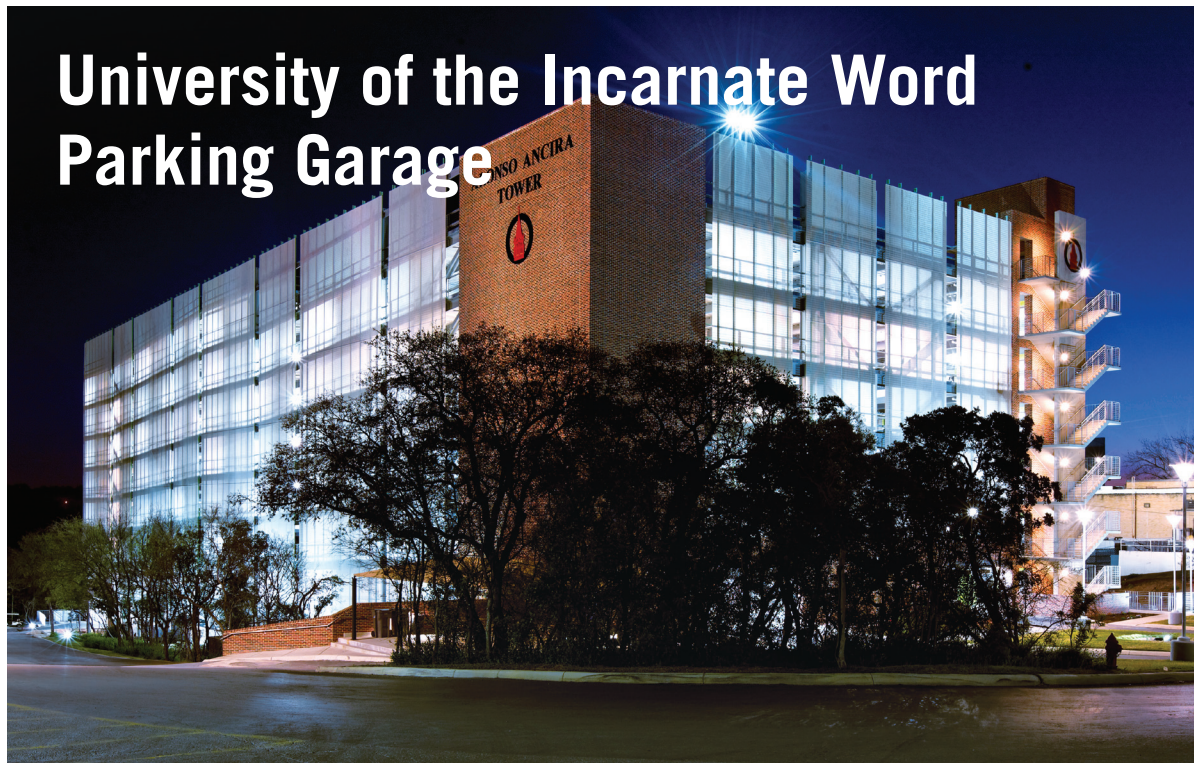
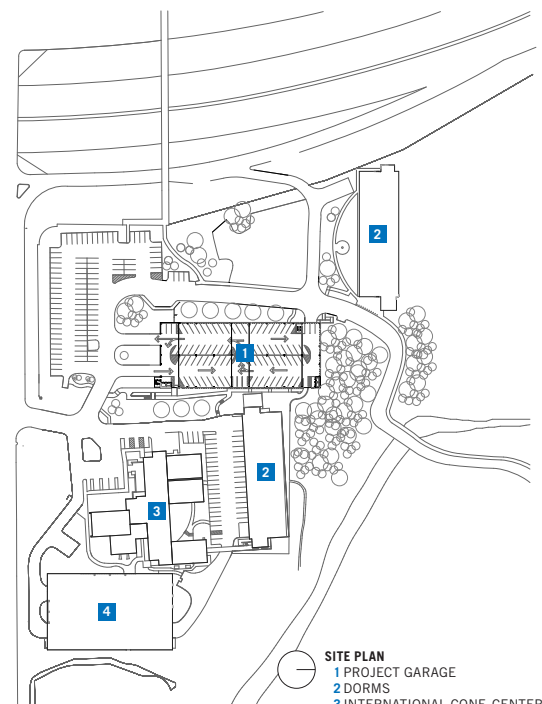


University of the Incarnate Word Parking Garage



SECTION



SITE PLAN

- 1 PROJECT GARAGE
- 2 DORMS
- 3 INTERNATIONAL CONF. CENTER
- 4 PARKING GARAGE

Designed by Marmon Mok, the 290,000-sf parking garage on the University of the Incarnate Word campus in San Antonio is located on a highly visible yet constrained site. The garage features 800 spaces for cars on nine tiers. The architects designed a skeleton-like steel structure that appears lighter and more open than a pre-cast concrete assembly. The main exterior cladding comprises 55,000 square feet of white fiberglass grate attached to wide-flange supports of fiberglass painted lime-green. The industrial-grade fiberglass grate, originally designed for and installed in chemical plants, was chosen because it offered the most aesthetic opportunities and economical feasibility. The grate creates a lacy grid that animates the building throughout the day with the changing sunlight. At night, the open-grid panels seem to uniformly glow, emitting interior illumination. The panels appear nearly transparent when viewed head-on and opaque from an oblique angle, rendering cars parked in the garage as invisible to motorists traveling along the adjacent highway.

NOELLE HEINZE

PROJECT University of the Incarnate Word Parking Garage, San Antonio

CLIENT University of the Incarnate Word

ARCHITECT Marmon Mok Architecture + McChesney/Bianco Architects

DESIGN TEAM Dror Baldinger, AIA; Mike McChesney, AIA; Cody McBreaty, AIA; Cindy De Hoyos, AIA; Alfred Brice, AIA

CONTRACTOR Joeris General Contractors

CONSULTANTS Danysh & Associates (structural); HMG & Associates (MEP); Kimley-Horn and Associates (civil); Laffoon Associates (landscape)

PHOTOGRAPHER Dror Baldinger, AIA

RESOURCES CONCRETE: Urban Concrete; BRICK: Cloud Ceramics (D'Hanis Clay Products); STRUCTURAL AND MISC STEEL: Trans-Tex Fabrication; ELECTRICAL, ELECTRICAL SLEEVES: Fisk; FIBERGLASS SKIN: EPI; ROOFING AND SHEET METAL: Superior Roofing; DOORS AND HARDWARE: Wesley-Thompson; CABLE RAIL AND GUARDRAILS: Quality Fence; SIGNAGE: Sign Resource Management; ACCESS DOORS: T.H. Willis; ELEVATOR: Otis Elevator; HVAC/PLUMBING: AJ Monier; PAINT: Sherwin Williams